

AS-S

AUTOMATIC UNIFORM SIDEDRIVE CARTON SEALER

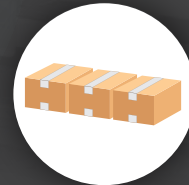
The BestPack™ AS-Stainless Steel Series is an operator-free carton sealer designed to meet the needs of uniform in-line carton closure applications in wet environments. Designed with a solid four column support structure and using dual motor side belt technology, the AS-S closes all four top flaps and seals the top & bottom of the carton, using 45-60 PSI and 4-5 SCFM of air.

All BestPack stainless steel units are crafted with food grade 304 stainless steel for 21 CFR 110 compliance and available in splash resistant or wash down models.

Interlock gates in the flap folding section is included but not shown in the above picture.



FULLY AUTOMATIC



UNIFORM CARTONS



TOP & BOTTOM SEAL

110 VOLTS 60 HZ

Power Requirements

UP TO 34 CPM

Speed

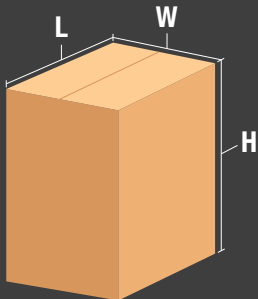
45-60 PSI, 4-5 SCFM

Air Requirements

500-585 LBS

Shipping Weight

CARTON RANGE



Length (min. - max.)
(8.0" - 27.5")

Width (min. - max.)
(6.0" - 20.0")

Height (min. - max.)
(5.5" - 20.0")

Specifications based on AS22-2S

STANDARD FEATURES

- Heavy Duty 2mm Food Grade 304 Stainless Steel Welded Frame Including Upper Welded Legs
- Side Belt Drive System with 1-piece Molded Belts and V-belt Guide
- Accepts 2" and 3" Pop-out BestPack High Speed Food Grade 304 Stainless Steel Tape Heads
- Width/Height Adjustment Handle can be Mounted on Either Side of the Carton Sealer
- Heavy Duty Upper Assembly Four Post System
- Aluminum Framed Interlock Safety Gates in the Kicker Station
- Heavy Duty Maintenance Free Oil-less Air Cylinders
- Electrical Box is Mounted on the Left Side of the Sealer
- Adjustable Bed Height 22.5" to 30.0"
- Tape Roll Lengths: 1,000 yd., 1,500 yd., 2,000 yd.
- Quality UL Approved Electrical Parts

OPTIONS

- Spare Parts Kit
- High Speed Motor Upgrade (Up to 125 ft. per min.)
- Food Grade 304 Stainless Steel Locking-Heavy-Duty Casters
- Aluminum Framed Interlock Safety Gates for the Major Flap Folding and Sealing Stations
- Compatible Indexer: ARX Model

EXTRA ACCESSORIES TO IMPROVE EFFICIENCY



STAINLESS LOCKING CASTERS

The heavy duty stainless locking casters allow you to move a carton sealer around.



STAINLESS STEEL TAPE HEAD

Standard AC Tape Head in Food Grade 304 Stainless Steel.



STAINLESS LONG INFEED/EXIT CONVEYOR W/ L-BRACKET

This 39.5" long conveyor is a great work platform and allows for staging of cartons on the infeed and the exit.



SPARE PARTS KIT

Spare Parts Kits may vary based on machine

Minimize downtime with BestPack's Spare Parts Kit.



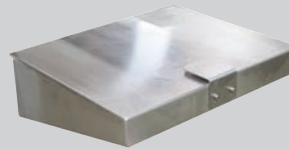
LOW OR NO TAPE SENSOR

The low tape light allows the operator to prepare a new roll of tape. The no tape alarm will inform the operator of the error so that the carton may be resealed.



INDEXER STATION

The indexer's function is to separate and time cartons going into the carton sealer.



STAINLESS SHORT INFEED/EXIT CONVEYOR W/ L-BRACKET

This machine is available in 304 stainless steel which is food grade safe for food applications.



HIGH SPEED MOTOR

High Speed Motor Upgrade (up to 125 ft.)

POPULAR AS-S MODELS

Please refer to comparison chart for complete list of models.

MODEL	MACHINE DIMENSIONS LENGTH x WIDTH x HEIGHT	CARTON RANGE** LENGTH (min. - max.) x WIDTH (min. - max.) x HEIGHT (min. - max.)	CONVEYOR HEIGHT HEIGHT (min. - max.)	CARTONS PER MIN.***	SHIPPING WEIGHT (LBS)
AS12-2S 2" Tape Head	(70.2**) x (26.5") x (68.0")	(8.0" - 25.5") x (6.0" - 14.0") x (6.5" - 20.0")	(22.5" - 30.0")	Up to 34	527
AS12-3S 3" Tape Head	(70.2**) x (26.5") x (68.0**)	(8.0" - 25.5") x (6.0" - 14.0") x (6.5" - 20.0")	(22.5" - 30.0")	Up to 34	527
AS22-2S 2" Tape Head	(77.7**) x (33.8") x (69.0")	(8.0" - 27.5") x (6.0" - 20.0") x (5.5" - 20.0")	(22.5" - 30.0")	Up to 34	616
AS22-3S 3" Tape Head	(77.7**) x (33.8") x (69.0**)	(8.0" - 27.5") x (6.0" - 20.0") x (5.5" - 20.0")	(22.5" - 30.0")	Up to 34	616

Information subject to change without notice.

U - Unlimited
All Models Available in High Speed
* Safety Gates are an Additional 20" Long
** Outside Dimensions Only
*** Based on Customer Application



For more information please go to:
WWW.BESTPACK.COM or call us at **1.888.588.2378**