

2 Minute Maintenance

In order to maintain your BestPack carton sealer in top operating condition, please take two minutes after every shift change to perform the following maintenance procedure.

Step 1: Clean the Machine



Blow the machine with dry air, paying special attention to all moving parts.

Step 2: Water Reservoir

(applicable if the machine uses air)



Bleed off any moisture that has gathered in the main regulator, by pushing the button located at the bottom of glass reservoir.

Step 3: Clean & Oil Blade



A) Remove any glue and plastic film that may have adhered to the cutting blades. Wipe the blades with a clean rag.

Note: For stubborn glue accumulation, apply WD-40 to a clean rag and wipe the blades.

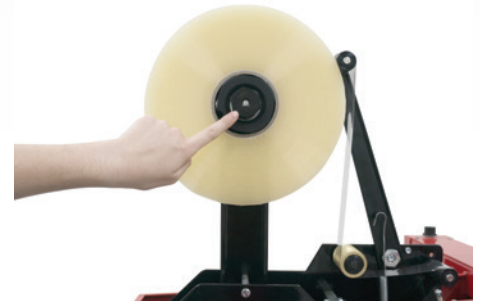
Do NOT use any hard objects to scrape accumulation from the blade as it could damage the blade.

Caution: Blades are very sharp and should be handled with care.



B) Lubricate the blade, by applying oil to the blade guard. This keeps the adhesive from sticking to the blade.

Step 4: Adjust Tension Knob



Check the tension knob on the mandrel to ensure the tape is feeding correctly through rollers.



A) Make sure tension is not too tight, as it will stretch the tape tabs and will not adhere to the carton correctly.

B) Loosen Tension - Turn the knob left. If the tension is too loose turn knob right and adjust accordingly.

Note: Improper adjusting of tension knob, may lead to poor carton sealing.

Please reference your BestPack machine manual for more detailed information about proper alignment, adjustments, replacement parts, and for troubleshooting / correcting problems.

IMPORTANT SAFETY REMINDER! Remember to lockout all energy sources (i.e. power down and shut off air supply) and release stored energy prior to servicing or moving the machine to prevent injury.

Weekly Maintenance

In order to maintain your BestPack carton sealer in top operating condition, please take a few minutes every week to perform the following maintenance procedure.

Step 1: Rubber Rollers

- A)** Check the front rubber roller on the tape head for proper resistance.
- B)** Rear roller should move freely on tape head shaft.
- C)** Replace rollers if needed.

Note: If the clutch in the roller is not functioning properly, the tape will wrap around the roller.

Step 2: Knurled Rollers

- A)** Check the knurled roller for adhesive build-up.
- B)** If there is adhesive build-up, wipe roller and blade with rag sprayed WD-40.

**For Additional
Questions
Contact BestPack**

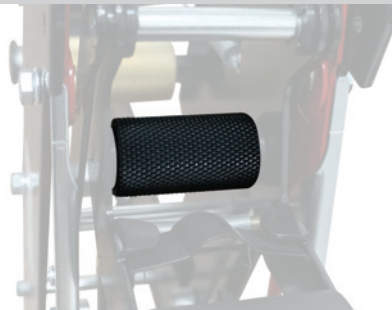
BestPack

the total tape sealing solution

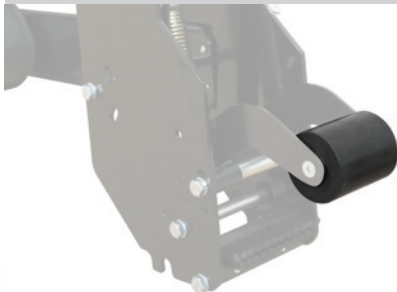
Call Toll Free
1.888.588.2378



Front Rubber Roller



Knurled Roller



Rear Rubber Roller



1-Way Knurled Roller

If you have any issues contact BestPack for more assistance.

For replacement parts visit our new Parts store at:

parts.bestpack.com



Please reference your BestPack machine manual for more detailed information about proper alignment, adjustments, replacement parts, and for troubleshooting / correcting problems.

IMPORTANT SAFETY REMINDER! Remember to lockout all energy sources (i.e. power down and shut off air supply) and release stored energy prior to servicing or moving the machine to prevent injury.