



ARX

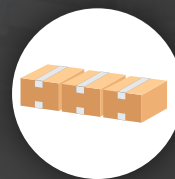
USED FOR SPACING OUT UNIFORM CARTONS

The BestPack ARX Indexer is the perfect unit to place in front of the BestPack AS or AQ type Fully Automatic Uniform Carton Sealers. The ARX Indexer separates and times the cartons in the sealer to insure proper top flap folding and sealing of the cartons with no carton jamming. The indexer also has a timer that is adjustable to control the spacing between the cartons by controlling how long a duration the drop and stop is. This timing ability is useful in timing the speed of cartons being fed down line to such equipment as label printers and or carton palletizers. This unit is the strongest and most positive indexing system in the market.

All BestPack units are available in our standard baked enamel finish and food grade 304 stainless steel for 21 CFR 110 compliance.



FULLY AUTOMATIC



UNIFORM CARTONS



INDEXING

110 VOLTS 60 HZ

Power
Requirements

UP TO 57 CPM

Speed

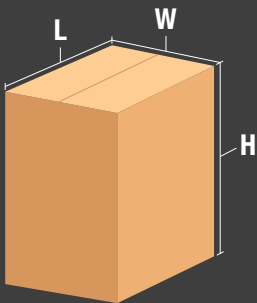
50 PSI, 2 SCFM

Air
Requirements

260-350 LBS

Shipping
Weight

CARTON RANGE



Length (min. - max.)
(8.0" - 27.5")

Width (min. - max.)
(6.0" - 21.0")

Height (min. - max.)
(6.0" - 20.0")

Specifications based on ARX20H

STANDARD FEATURES

- Heavy Duty 2mm Welded Steel Frame
- Two Motor Drive Roller Conveyors
- Two Section Powered Rollers - Front Section with Drop and Stop Feature for Positive Carton Separation
- Adjustable Timer for Carton Space Separation
- Heavy Duty Maintenance Free Oil-less Air Cylinder
- UL Approved Electrical parts

EXTRA ACCESSORIES TO IMPROVE EFFICIENCY



LOCKING CASTERS

The heavy duty locking casters allow the carton sealer quick and easy mobility to other locations.



SPARE TAPE HEAD

Order a spare tape head with your machine to minimize down time. Having a spare will allow you to drop in a tape head with a new roll of tape in no time!



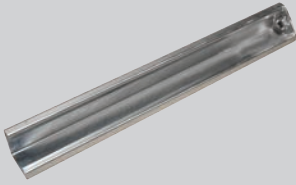
SAFETY GATES

Aluminum frame interlock safety gates can be added to the carton sealer for an extra layer of protection. These interlock safety gates protect the operator from all of the moving parts of the carton sealer.



ON/OFF SWITCH

With the additional ON/OFF control box you can stop and start the carton sealer, no matter what side the operator is on.



LEG EXTENSIONS

Allows the sealer to reach conveyor pass through heights that are taller than normal in a production line.



AIR REGULATOR

When added to our ARX type indexer the indexer can then be used in front of other pieces of equipment such as a label application as long as air is available.

POPULAR ARX MODELS

Please refer to comparison chart for complete list of models.

MODEL	MACHINE DIMENSIONS LENGTH x WIDTH x HEIGHT	CARTON RANGE LENGTH (min. - max.) x WIDTH (min. - max.) x HEIGHT (min. - max.)	CONVEYOR HEIGHT HEIGHT (min. - max.)	CARTONS PER MIN.*	SHIPPING WEIGHT (LBS)
ARX10	(34.2") x (22.5") x (35.0")	(8.0" - 27.5") x (6.0" - 14.6") x (4.5" - 20.0")	(22.5" - 30.0")	Up to 34	260
ARX10H	(34.2") x (22.5") x (35.0")	(8.0" - 27.5") x (6.0" - 14.6") x (4.5" - 20.0")	(22.5" - 30.0")	Up to 57	260
ARX20	(34.2") x (35.0") x (35.0")	(8.0" - 27.5") x (6.0" - 21.0") x (6.0" - 20.0")	(22.5" - 30.0")	Up to 34	350
ARX20H	(34.2") x (35.0") x (35.0")	(8.0" - 27.5") x (6.0" - 21.0") x (6.0" - 20.0")	(22.5" - 30.0")	Up to 57	350

Information subject to change without notice.

* Based on Customer Application



BESTPACK

For more information please go to:
WWW.BESTPACK.COM or call us at **1.888.588.2378**

© 2024 BestPack Packaging Systems. All rights reserved. This document is BestPack Public Information.