

CARTON SEALING TAPE
QUALITY, DURABILITY, AND CONSISTENCY

WHY CHOOSE BESTPACK?

AN EDGE OVER OTHER CARTON SEALING BRANDS

TAPE HEADS
MADE FOR HEAVY INDUSTRIAL USE

CARTON SEALERS
THE TOTAL TAPE SEALING SOLUTION



CARTON SEALERS/ERECTORS The Total Tape Sealing Solution

Longer Reliability

- BestPack Sealer Frames are CNC Stamped and Welded to Assure Quality and Extend the Life of the Sealer.

Less Maintenance

- BestPack Belt Drive Systems are Rolled Behind the Belts with Nylon Rollers to Reduce Belt Friction, Extending the Life of the Belts & the Motors.

High Speed

- Carton Sealers up to 57 cartons/min.
- Carton Erectors up to 15 cartons/min.
- All Carton Sealers come standard with High Speed Tape Heads.



CARTON SEALING TAPE Quality, Durability, and Consistency

Consistent Quality

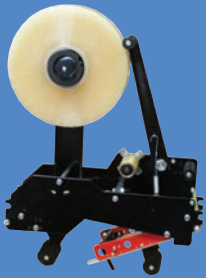
- BestPack Tape is created from one Facility in Taiwan to maintain consistency.

Full Line of Tape

- BestPack has a Full Line of Acrylic Packaging Tape using Premium Rohm & Haas Brand Adhesive.
- BestPack has a Full Line of Hot Melt Tape

BG - Only at BestPack

- Extreme Temperatures & Dusty Working Conditions
- Works for Both Acrylic & Hot Melt Applications
- 100% Recycled Corrugated Cartons.



TAPE HEADS Made for Heavy Industrial Use

Durability

- An Optimizing Arm Reduces Unwind Noise and Smooths Tape Flow.
- Brass Knurled 1-Way Roller Handles All Adhesive Types with Minimal Service.

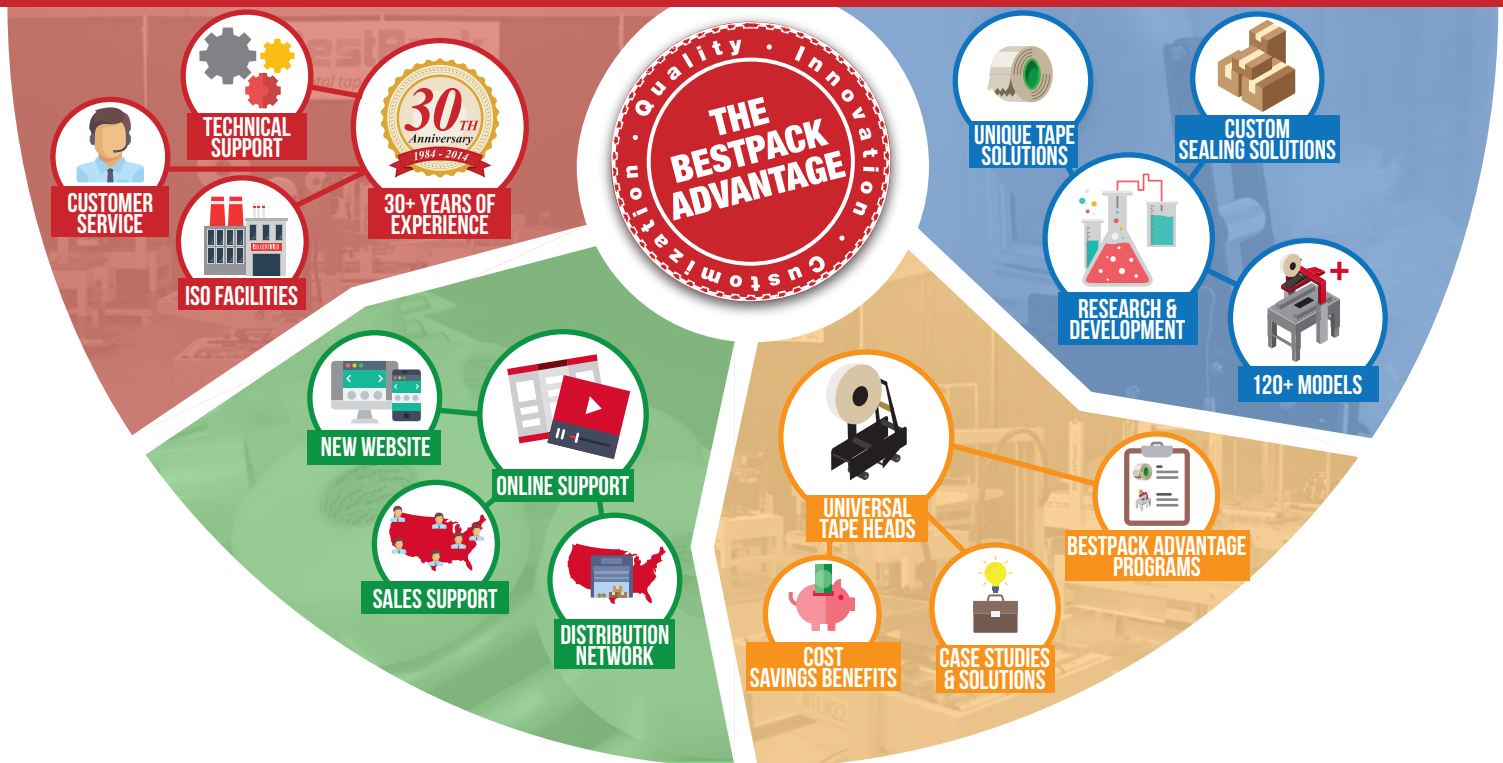
Universal

- BestPack's Optional BP Universal Tape Head is Compatible with Other Name Brand Carton Sealers.

High Speed

- BestPack Tape Heads are Designed for Both Standard & High-Speed Applications.

BEING PART OF THE BESTPACK TEAM HAS ITS BENEFITS



BestPackTM
the total tape sealing solution

For more information please go to:
WWW.BESTPACK.COM or call us at **1.888.588.2378**

© 2020 BestPack Packaging Systems. All rights reserved. This document is BestPack Public Information.