



MSD-S

MANUAL SIDEDRIVE DUAL MAST STAINLESS SEALER

The BestPack™ MSD 304 Stainless Steel Series Semi-Automatic Uniform Tape Carton Sealer is our operator-fed and adjustable carton sealer designed to cater to the needs of light-to-heavy duty uniform carton closure applications where there are wet environments. Units are available for either splash resistant or wash-down applications.

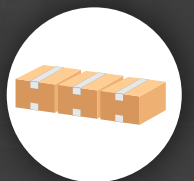
All BestPack stainless steel sealers are made with food grade 304 stainless steel for 21 CFR 110 compliance and include food grade 304 stainless steel High Speed tapeheads.



TOP & BOTTOM SEAL



OPERATOR REQUIRED



UNIFORM CARTONS

110 VOLTS 60 HZ

Power
Requirements

UP TO 40 CPM

Speed

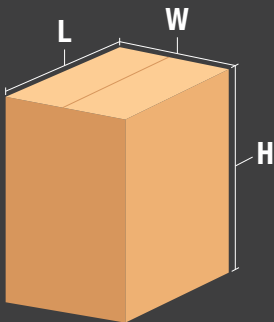
N/A

Air
Requirements

360-432 LBS

Shipping
Weight

CARTON RANGE



Length (min. - max.)
(6.0" - U)

Width (min. - max.)
(4.25" - 20.0")

Height (min. - max.)
(3.5" - 20.5")

Specifications based on MSD22-2S

STANDARD FEATURES

- Heavy Duty 2mm Food Grade 304 Stainless
- Welded Frame Including Upper Welded Legs
- Side Belt Drive System with Idler Rollers Behind the 1-piece Die Molded Belts that also Includes V-belt Guide
- Accepts 2" and 3" Pop-out Food Grade 304 Stainless Steel BestPack High Speed Tape Heads
- Telescopic Mast Design with Screw Drive Shafts and a Unique 4 Roller Upper Side Compression Unit
- Width and Height Adjustment Crank Handles can be Mounted on Either Side of the Sealer
- Electrical Box is Mounted on the Left Side of the Sealer
- Adjustable Bed Height for:
MSD22 & MSD32 – 23.5" to 30.0"
MSD23 & MSD33 – 25.8" to 30.0"
- Tape Roll Lengths: 1,000 yd., 1,500 yd., and 2,000 yd.
- Upper Telescopic Mast is Tapped and Drilled that can be Raised (Un-bolted, Raised and Re-bolted) for an Extra 4" Carton Height if Needed
- Quality UL Approved Electrical Parts

OPTIONS

- Food Grade 304 Stainless Steel Infeed/Exit Conveyor w/ L-Bracket Stabilizer
- Food Grade 304 Stainless Steel Heavy Duty Dual Locking Casters
- Spare Parts Kit
- High Speed Motor Upgrade (Up to 125 ft. per min.)
- 3 Flap Folder
- Aluminum Frame Interlock Safety Gates

EXTRA ACCESSORIES TO IMPROVE EFFICIENCY



FOOD GRADE 304 STAINLESS STEEL LOCKING CASTERS

The heavy duty stainless locking casters allow you to move a carton sealer around.



STAINLESS STEEL TAPE HEAD

Standard AC Tape Head in Food Grade 304 Stainless Steel.



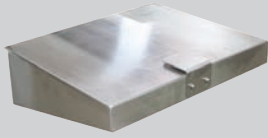
STAINLESS STEEL LONG INFEEED/EXIT CONVEYOR W/ L-BRACKET STABILIZER

This 39.5" long conveyor is a great work platform and allows for staging of cartons on the infeed and the exit.



SPARE PARTS KIT

Spare Parts Kits may vary based on machine
Minimize downtime by always having a spare with BestPack's Spare Parts Kit.



STAINLESS STEEL SHORT INFEEED/EXIT CONVEYOR W/ L-BRACKET STABILIZER

This 19.75" stainless short conveyor is a great work platform and allows for staging of cartons on the infeed and the exit.



3 FLAP FOLDER

This accessory adds automation to your adjustable manual carton sealer. The operator only need to close the rear minor flap and push the carton into the unit, the carton sealer does the rest.



CARTON SEALING TAPE

Put high quality tape on your BestPack Carton Sealer. Make sure to order machine length rolls for your new carton sealer.



HIGH SPEED MOTOR

High Speed Motor Upgrade (up to 125 ft.)

POPULAR MSD MODELS

Please refer to comparison chart for complete list of models.

MODEL	MACHINE DIMENSIONS LENGTH x WIDTH x HEIGHT	CARTON RANGE* LENGTH (min. - max.) x WIDTH (min. - max.) x HEIGHT (min. - max.)	CONVEYOR HEIGHT HEIGHT (min. - max.)	CARTONS PER MIN.	SHIPPING WEIGHT (LBS)
MSD22-2S 2" Tape Head	(39.5") x (32.8") x (70.3")	(6.0" - U) x (4.25" - 20.0") x (3.5" - 20.5")	(23.5" - 30")	Up to 40	360
MSD22-3S 3" Tape Head	(39.5") x (32.8") x (70.3")	(6.0" - U) x (5.25" - 20.0") x (3.5" - 20.5")	(23.5" - 30")	Up to 40	360
MSD23-2S 2" Tape Head	(39.5") x (32.8") x (80.3")	(6.0" - U) x (4.25" - 20.0") x (3.9" - 30.0")	(25.8" - 30")	Up to 40	411
MSD23-3S 3" Tape Head	(39.5") x (32.8") x (80.3")	(6.0" - U) x (5.25" - 20.0") x (3.9" - 30.0")	(25.8" - 30")	Up to 40	411
MSD32-2S 2" Tape Head	(39.5") x (32.8") x (70.3")	(6.0" - U) x (4.25" - 30.0") x (3.5" - 20.5")	(23.5" - 30")	Up to 25	432
MSD32-3S 3" Tape Head	(39.5") x (43.8") x (70.3")	(6.0" - U) x 5.25" - 30.0") x (3.5" - 20.5")	(23.5" - 30")	Up to 25	432

Information subject to change without notice.

U - Unlimited
* Outside Dimensions Only
All Models Available in High Speed



BESTPACK

For more information please go to:
WWW.BESTPACK.COM or call us at **1.888.588.2378**

© 2021 BestPack Packaging Systems. All rights reserved. This document is BestPack Public Information.